

Location

Shizuoka Prefecture is located close to the center of Japan, with easy access to metropolitan areas such as Tokyo and Osaka. Shizuoka is blessed with a temperate climate and rich natural surroundings. It flourished during the Edo Period (17th to 19th centuries) as a location along the Tōkaidō road, the main route between Tokyo and Kyoto. Shizuoka still has many historic sites, traditional festivals, and breathtaking scenic views.



The campus is surrounded by lush green natural surroundings. With museums, libraries, and theatres nearby, the environment offers excellent opportunities for learning and communicating about culture, the arts, and education.

Access

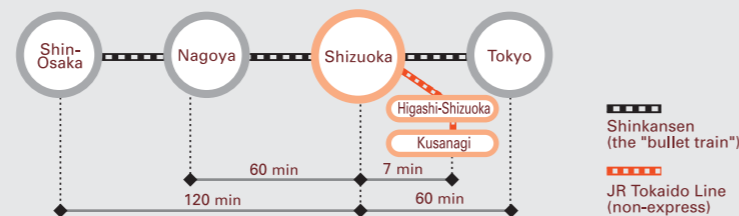
Traveling by air



About Mt. Fuji Shizuoka Airport

Mt. Fuji Shizuoka Airport opened in 2009. It is Shizuoka's international gateway, providing domestic and international air connections, linking to major cities across Japan and throughout Asia.

Access to Shizuoka Station from major cities



Train times based on JR Central Railway timetable. Times given for the Shinkansen are for Hikari trains. Transfer time not included.

- From Kusanagi Station**
15 minutes on foot from Kusanagi Station on the JR Line, or from Kenritsu Bijutsukan Mae (Prefectural Museum) Station or Kusanagi Station on the Shizutetsu Line. 10 minutes by bus from Kusanagi Station. Take a bus bound for Kusanagi Danchi on the Miho-Kusanagi Route to Kenritsu Daigaku Mae (on weekday mornings) or to Kenritsu Daigaku Iriguchi (on weekday afternoons and weekends).
- From Higashi-Shizuoka Station**
20 minutes on foot from Higashi-Shizuoka Station on the JR Line.
- From Shizuoka Station**
15 minutes by bus from Shizuoka Station on the JR Line. Take a bus on the Miwa Ohya Route (No. 8) at the station's north entrance or the Minami Route (No.21) at the south entrance to Oshika-Kyoku Mae Stop. The campus is a 3-minute walk from the bus stop.

静岡県立大学

UNIVERSITY OF SHIZUOKA
GUIDE 2020-2021



Famous Sights of the Fifty-three Stations "Yoshiwara: Floating Islands in Fuji Marsh"

Artist: Utagawa Hiroshige (Japanese, Tokyo (Edo) 1797-1858 Tokyo (Edo))

静岡市東海道広重美術館 蔵



Message



Chairman of the Board of Directors, Shizuoka Prefectural University Corporation

Kazuo OIKE

Our university does its utmost to ensure that students enjoy a safe and fulfilling school life, and upon graduation go on to become citizens who contribute to the flourishing of their communities. We are always ready to respond to the varied expectations of students who have come to Shizuoka from all areas of Japan and the world. Shizuoka is located in the center of the Japanese archipelago and is a very comfortable place to live, as it is blessed beautiful scenery and many natural resources. In this rich environment, students can spend their time learning deeply, forming life-long friendships, and enjoying the pleasures of everyday life.

A handwritten signature in cursive script, reading "K. Oike".



President of the University of Shizuoka

Hiroshi KITO

What is the role of the university in the 21st century? A university should foster individuals who can help to usher in a new civilization to replace industrial civilization. This new civilization needs to be comfortable, convenient, safe, and sustainable. I hope that the students of our university will serve as global citizens with knowledge of, an attachment to, and pride in their community— individuals who follow the principle of “Creating community, creating the future.”

A handwritten signature in cursive script, reading "Hiroshi Kito".

Introduction

The University of Shizuoka is located in Shizuoka Prefecture, which lies in the center of Japan and is home to Mt. Fuji, Japan's tallest mountain. The mountain has long been considered a symbol of Japan and has been revered as a sacred site since ancient times. Mt. Fuji is also one of the most popular motifs in Japanese poetry, painting, and other art forms, attesting to the prominent place it occupies in the hearts and minds of the Japanese people. It was registered as a World Cultural Heritage site in 2013, a significant source of pride for the people of Shizuoka. As the prefecture's own university, the goal of the University of Shizuoka is to be valued by the citizens of the prefecture, and to be a source of pride for them.



The University offers a wide range of courses in fields that respond to the various needs of modern society, including those related to health, medicine, nursing, globalization, and the information society. These five fields of research and education are taught according to stringent academic standards, and students are offered practical, specialized course curricula. Drawing upon its diverse strengths, the University ensures that students studying in different departments have ample opportunities to interact with each other, promoting cooperation across educational and research areas.

The monument at the center of the Kusanagi Campus symbolizes the openness of the University. This openness is one of the University's core principles. It is open to the local community, including to administrative and local industry groups, to collaborative research projects, to community revitalization projects driven by students and community residents, and to continuing education for citizens. The University also conducts research and education in accordance with international standards, thus contributing to the global community.



Undergraduate & Graduate School

School of Pharmaceutical Sciences

Pharmaceutical science is the only academic field that systematically covers a comprehensive range of studies related to human life and health, including organic chemistry, physical chemistry, biochemistry, pharmacology, pharmacognosy, molecular toxicology and public health, pharmaceuticals, and clinical pharmacy. The School of Pharmaceutical Sciences is composed of two divisions. The Division of Pharmaceutical Sciences is a 4-year program that fosters researchers and technical experts. Most graduates of the Division proceed to the Graduate School of Pharmaceutical Sciences, where they acquire a research-oriented perspective. The Division of Pharmacy is a 6-year program that fosters pharmacists with advanced technical expertise and a strong ethical outlook. Fifth-year students receive practical training at hospitals and pharmacies, and graduates are qualified to take the National Pharmacist Examination. The School's highly qualified faculty members provide students with a comprehensive education based on a rich curriculum.



School of Food and Nutritional Sciences

In recently years, there is increasing interest in issues related to food and health, such as food safety, the proliferation of lifestyle-related diseases, and complex environmental problems. The School of Food and Nutritional Sciences is founded on principles of systematic education in the life sciences, and it also offers comprehensive courses in scientific English and information education. This educational program fosters scientists, highly skilled technicians, and nutritionists who have the communication skills required to work in an international workforce and address food, environmental, and health issues on a global scale. The School offers students the opportunity to engage in comprehensive study and research in the field. Topics covered in the Department of Food Science and Biotechnology include the development and analysis of foodstuffs, and in the Department of Nutrition and Life Sciences include the improvement of health and medical treatment through nutrition. In addition, the Department of Environmental and Life Sciences fosters technical experts who address food-related environment issues.



Graduate School of Integrated Pharmaceutical and Nutritional Sciences

The people of Shizuoka Prefecture have one of the longest healthy life expectancies in the world. To understand and enhance the health and lifestyle factors underlying this remarkable life expectancy, the University of Shizuoka combined its research programs in pharmaceutical sciences and food and nutritional sciences in 2012, creating the Graduate School of Integrated Pharmaceutical and Nutritional Sciences — the first graduate school of its kind in Japan. To advance this research agenda in Shizuoka and worldwide, the School has also established three associated research centers: the Center for Pharma-Food Research, the Tea Science Center, and the Food and Environment Research Center. The School has an excellent research record, and has ranked in first place for three funding categories in Japan's national Grants-in-Aid for Scientific Research program: "Eating habits (Dietary sciences)", "Environmental and hygienic pharmacy", and "Integrated nutrition science". It also collaborates with a large number of universities worldwide. The mission of the School is to contribute to society by extending healthy life expectancy through research and education in the pharmaceutical, food, nutritional, and environmental sciences.

School of International Relations

In recent years, international relations have become more complex, raising a variety of challenging issues. Thus, the languages, cultures, and other aspects of the various regions of the world need to be understood and respected, and efforts need to be made to address specific problems from a global perspective. The School of International Relations instills in students critical thinking skills, deep insight, and broad knowledge by training them to view relations among nations from a range of perspectives and to adopt approaches from various disciplines. The School fosters in students an understanding of the dynamics of the international community. The School also connects people from many nations and cultural backgrounds, fostering individuals who can cooperate to address global and regional issues.



Graduate School of International Relations

Globalization may appear to be homogenizing our ways of life, but it is in fact diversifying and complicating them, due to various counter-globalization trends such as traditionalism, nationalism, localism, ethnicity, and religious extremism taking place in contemporary international contexts. For this reason, both global and international studies and local cultural or area studies are equally needed and inseparable from each other to resolve a wide range of complicated issues today. To foster highly trained specialists and active practitioners fully equipped with global as well as local knowledge of the international and multicultural arenas, the Graduate School of International Relations fosters students with the ability to apply a relevant combination of multidisciplinary approaches and comparative methods. The School also strongly encourages students to conduct fieldwork to approach the lived experience and realities of the people concerned through the full use of the researcher's own senses. The graduate program is supported by three research centers attached to the School: the Center for Korean Studies, the Wider Europe Research Center, and the Center for Global Studies.

School of Management and Information

Japan is currently facing numerous challenges stemming from domestic and international pressures, including economic and social globalization, low birth rate, and an aging population, among other issues. The School of Management and Information fosters individuals who can innovate and solve problems by integrating the specialized knowledge of four fields: Business Administration, Policy Studies, Data Science, and Tourism Management. Students acquire basic knowledge in their first year and then hone their expertise in one or more of these areas, thus becoming experts in a particular field who are at the same time familiar with related fields. Graduates of the School are highly regarded by employers, as reflected in their high rate of employment, and future graduates are expected to go on to even greater accomplishments.



Graduate School of Management and Information of Innovation

To respond to newly emerging needs for social innovation, it is necessary both to develop comprehensive strategies that incorporate extensive knowledge of the local circumstances of Shizuoka Prefecture and to provide a center for training individuals capable of making innovation a reality. As such a center, the Graduate School of Management and Information of Innovation aims to maximize the advantages of Shizuoka Prefecture's local characteristics and location, and to foster graduates who can contribute to the local community by generating and utilizing knowledge shoulder to shoulder with the people of the community.



School of Nursing

The Japanese healthcare landscape is changing at an astonishing rate, driven by factors such as our low birthrate and aging society, increased health consciousness among the general public, technological advances and increased specialization in medicine, the impact of bioethics, and the increasing frequency of large-scale disasters. Nursing professionals, including public health nurses, midwives, and hospital nurses, must not only have the expertise, skills and problem-solving capabilities to navigate this landscape appropriately, but must also work with clients with sincerity and humility. In order to meet these social needs, the School of Nursing offers a wide variety of liberal arts courses to cultivate student's humanity. We foster public health and hospital nurses with the spirit to boldly take on difficult challenges by providing a curriculum of specialized nursing subjects, including clinical practice at a variety of health and medical institutions. In order to meet these social needs, the School of Nursing fosters public health and hospital nurses with the spirit to boldly take on difficult challenges by providing a curriculum of specialized nursing subjects, including clinical practice at a variety of health and medical institutions, as well as by offering a wide variety of liberal arts courses to cultivate students' humanity.



Graduate School of Nursing

The profession of nursing plays multifaceted roles in support of human health. The Graduate School of Nursing draws on the expertise of other departments at the University of Shizuoka and integrates various life-related scientific fields into its graduate programs. These programs hone students' expertise and practical skills, further developing the varied roles of the nursing profession. They foster nursing science researchers specializing in health, medical treatment, welfare, and education, as well as advanced nursing practitioners who contribute to the improvement of human health. As a part of these endeavors, a Master's Program in Midwifery was established in 2010, and a Doctoral Program in Nursing in 2020. The doctoral program fosters researchers, educators, and nurse leaders who provide high quality research and education.



Junior College

The University of Shizuoka Junior College is located at the University's Oshika Campus in Shizuoka City's Suruga Ward. The College trains students to be healthcare and welfare professionals in the three-year Dental Hygiene Program, the two-year Child Studies Program, and the two-year Social Welfare Program, which offers specializations in Social Welfare and in Care Welfare. The college follows four time-honored educational principles: education with ample practical training; careful attention to students' needs from commencement to graduation; support for students in obtaining qualifications; and education to foster a rich and well-rounded humanity. Through these principles, the College nurtures professionals who can meet the needs of the times and of the communities they serve.



Research activities

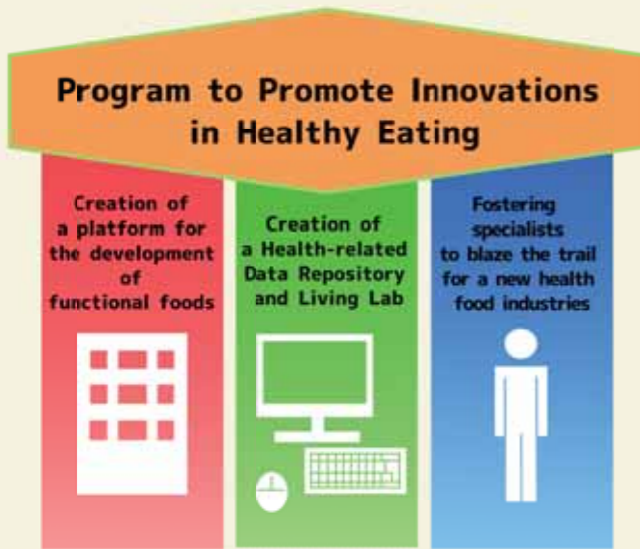
Education and research for longer, healthier lives

While Shizuoka Prefecture is facing local problems such as a rapidly aging population, the departure of younger people, and a decline in local industry, one of its advantages is that its citizens lead the nation in healthy longevity. As the prefecture's top educational institution, the University of Shizuoka promotes the systemization of "health and longevity science," a new discipline combining the pharmaceutical sciences and the food and nutritional sciences through programs sponsored by the Japanese Ministry of Education, Culture, Sports, Science, and Technology (MEXT) such as the 21st-Century Center of Excellence (COE) Program and the Global COE Program. The University has also created a center for



research on healthy longevity. In 2014, the MEXT Community-Building on Campus (CBC) Program sponsored the University's program called "A Site to Foster Personnel to Oversee Physical, Mental, and Public Health in the Shadow of Mt. Fuji". The CBC Program coordinates with local municipalities and it helps universities to engage in community-oriented education and research and to contribute to the community. The University of Shizuoka is the only university in the prefecture selected to participate in the program.

Since 2019, the University has implemented the Program to Promote Innovations in Healthy Eating. A key element of this program is the Health-Related Data Repository and Living Lab. The project is funded by a subsidy from Shizuoka Prefecture to promote the health food industry. The University established this project to assist with efforts to re-examine the lifestyles of the prefecture's residents in terms of their health, diet, etc., and residents are actively involved in these efforts. The project collects data on the health of residents and has created a framework to advise residents individually on diet and health. It also recruits participants for validation studies conducted by companies and research institutions, helps to create new industries, and helps the public to lead long and healthy lives.



Research on tea

Thanks to its temperate climate and rich natural surroundings, Shizuoka Prefecture has a long history of thriving agriculture and fisheries industries. Tea cultivation in the prefecture accounts for about 40 percent of all tea produced in Japan. The University of Shizuoka conducts research on tea across its departments, covering topics such as the biological functions of tea, its potential to slow aging and prevent illness, and sales strategies and product development.



Contributing to the community, collaborating with industry and government

A key role of the University of Shizuoka is contributing to the community and collaborating with industry and government. In 2019, the University created its "Organization to Promote Innovation in the Shadow of Mt. Fuji" in order to foster promising personnel through education and training in conjunction with the local community and to contribute to community growth by passing on the results of academic research. Planning is carried out by the Committee for Community Contribution and Collaboration with Industry and Government, which is chaired by the President of the University. The "Mirai Education and Training Center in the Shadow of Mt. Fuji" implements projects to contribute to the community. The Headquarters to Promote Collaboration between Industry and Academia implements projects involving collaboration with industry and government. The creation of this new organization has further promoted interdisciplinary research in the humanities and sciences within the university, has fostered personnel who are passing on the results of research and training to the community, and has promoted efforts to contribute to the community and to collaborate with industry and government.

Major achievements



International exchange



The University of Shizuoka has cooperative arrangements with a number of universities throughout the world, and is actively engaged in collaborative research, academic exchanges and exchange student programs with these overseas institutions.

Inter-university Agreements

<ul style="list-style-type: none"> University of Parma (Italy) Universitas Padjadjaran (Indonesia) Yanbian University (China) Donghua University (China) University of Valladolid (Spain) Daegu Health College (South Korea) California State University, Sacramento (United States) Roger Williams University (United States) Mahidol University (Thailand) Free University of Brussels (Belgium) University of California, Davis (United States) Bremen University of Applied Sciences (Germany) University of Nebraska, Lincoln (United States) University of California, Berkeley (United States) 	<ul style="list-style-type: none"> The Ohio State University (United States) Khon Kaen University (Thailand) Yonsei University (South Korea) Bogazici University (Turkey) Lille Institute of Political Studies (France) Griffith University (Australia) The University of Arizona (United States) Newcastle University (United Kingdom) Zhejiang Academy of Medical Sciences (China) University of the Philippines (Philippines) Moscow State Institute of International Relations (Russia) California State University, Northridge (United States) Zhejiang University (formerly Hangzhou University) (China)
---	---

Inter-departmental Agreements

<ul style="list-style-type: none"> Portland State University (United States) Malaya University (Malaysia) University of Victoria (Canada) Thammasat University (Thailand) Rajshahi University (Bangladesh) Seoul National University (South Korea) Massey University (New Zealand) California State University, Sacramento (United States) Riddet Institute (New Zealand) 	<ul style="list-style-type: none"> Dongseo University (South Korea) Foreign Policy Association of the Republic of Moldova (Moldova) New Zealand Institute for Crop & Food Research (New Zealand) (formerly Horticulture and Food Research Institute of New Zealand) Hue University (Vietnam) Chulalongkorn University (Thailand) Mahidol University (Thailand) Zhejiang University (China) Khon Kaen University (Thailand)
--	--

Language Study Abroad Programs

<ul style="list-style-type: none"> University of Victoria (Canada) Donghua University (China) Campus France (France) California State University, Sacramento (United States) 	<ul style="list-style-type: none"> University of California, Davis (United States) The Ohio State University (United States) Zhejiang University (China)
--	---

[May.1, 2020]
Listed in order of establishment, in reverse chronological order.

Number of International Students by Country [May, 2020]

	Mongolia	Indonesia	Korea	Taiwan	China	Nepal	Bangladesh	Thailand	Canada	Vietnam	Malaysia	Myanmar	Finland	Nigeria	Total
Undergraduate Students	0	9	6	1	23	1	0	0	0	11	4	1	1	0	57
Graduate Students	1	3	0	0	20	0	1	1	1	0	1	0	0	1	29
Research Students	0	3	0	0	5	0	0	0	0	3	0	1	0	0	12
Total	1	15	6	1	48	1	1	1	1	14	5	2	1	1	98