

# 静岡県立大学

UNIVERSITY OF SHIZUOKA  
GUIDE 2023-2024



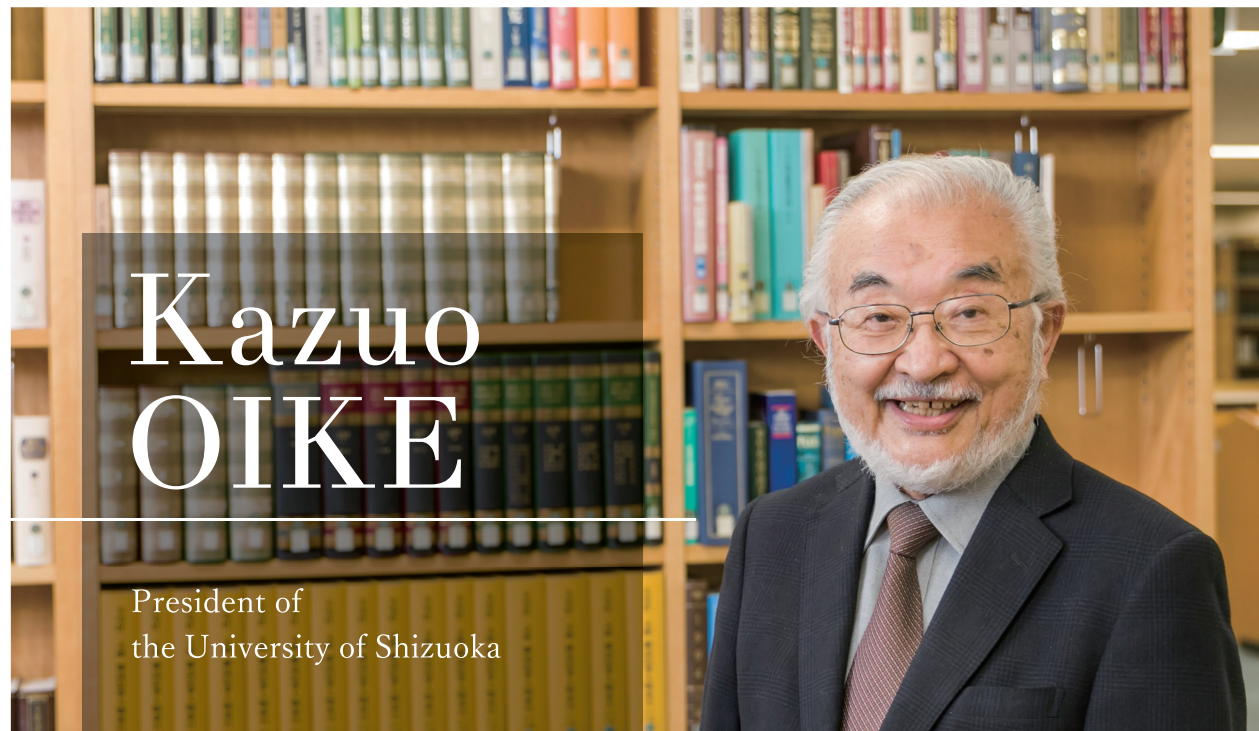
Famous Sights of the Fifty-three Stations "Tago Bay and the Pine Forest of Miho"

Artist: Utagawa Hiroshige (Japanese, Tokyo (Edo)) 1797-1858

静岡市東海道広重美術館 蔵



# Message



By fully capitalizing on the results of its research, the University of Shizuoka provides a place that can both prepare students to enter society and help them to devise ways to resolve the challenges they meet. The University also contributes to local development by turning research results into tangible advances that benefit society. To that end, the University partners with other universities in Shizuoka Prefecture, in other prefectures in Japan, and around the world. Shizuoka Prefecture is located in the center of the Japanese archipelago, at the juncture of four tectonic plates. The prefecture is blessed with a warm climate and abundant nature. It extends from the summit of Mt. Fuji and the central mountain region, to the “satoyama” areas that harmonize traditional agricultural practices with surrounding mountains and woodlands, to the Suruga Trough. It is also home to the Izu Peninsula, which gradually joined the main island of Honshu as the Philippine Sea Plate moved north. I hope that students can experience and enjoy these natural blessings during their studies.

The University is predicated not on students passively being taught but on students actively learning by themselves. It seeks to foster students who can identify a problem without a predetermined answer and then solve that problem themselves. When we want to know something, we should thoroughly investigate the topic. This leads to new knowledge, which is combined with knowledge from the past to produce human wisdom. When students have gleaned such new knowledge themselves, this wisdom becomes a major asset in their lives.

My hope is that our students will be healthy throughout their lives, that they will continue to learn throughout their lives, and that they will always endeavor to increase their knowledge. I would like them to develop the ability to achieve their goals in the fertile environment of the University of Shizuoka, and I hope they will enjoy their student days while making lifelong friends.

A handwritten signature of Kazuo Oike in black ink.

# Introduction

The University of Shizuoka is located in Shizuoka Prefecture, which lies in the center of Japan and is home to Mt. Fuji, Japan's tallest mountain. The mountain has long been considered a symbol of Japan and has been revered as a sacred site since ancient times. Mt. Fuji is also one of the most popular motifs in Japanese poetry, painting, and other art forms, attesting to the prominent place it occupies in the hearts and minds of the Japanese people. It was registered as a World Cultural Heritage site in 2013, a significant source of pride for the people of Shizuoka. As the prefecture's own university, the goal of the University of Shizuoka is to be valued by the citizens of the prefecture and to be a source of pride for them.



The University offers a wide range of courses in fields that respond to the various needs of modern society, including those related to health, medicine, nursing, globalization, and the information society. These five fields of research and education are taught according to stringent academic standards, and students are offered practical, specialized course curricula. Drawing upon its diverse strengths, the University ensures that students studying in different departments have ample opportunities to interact with each other, promoting cooperation across educational and research areas.

The monument at the center of the Kusanagi Campus symbolizes the openness of the University. This openness is one of the University's core principles. It is open to the local community, including to administrative and local industry groups, to collaborative research projects, to community revitalization projects driven by students and community residents, and to continuing education for citizens. The University also conducts research and education in accordance with international standards, thus contributing to the global community.





# Undergraduate & graduate schools

## School of Pharmaceutical Sciences

Pharmaceutical science is the only academic field that systematically covers a comprehensive range of studies related to human life and health, including organic chemistry, physical chemistry, biochemistry, pharmacology, pharmacognosy, molecular toxicology and public health, pharmaceuticals, and clinical pharmacy. The School of Pharmaceutical Sciences is composed of two divisions. The Division of Pharmaceutical Sciences is a 4-year program that fosters researchers and technical experts. Most graduates of the Division proceed to the Graduate School of Pharmaceutical Sciences, where they acquire a research-oriented perspective. The Division of Pharmacy is a 6-year program that fosters pharmacists with advanced technical expertise and a strong ethical outlook. Fifth-year students receive practical training at hospitals and pharmacies, and graduates are qualified to take the National Pharmacist Examination. The School's highly qualified faculty members provide students with a comprehensive education based on a rich curriculum.



## School of Food and Nutritional Sciences

In recent years, there is increasing interest in issues related to diet and health, such as food safety, the spread of lifestyle-related diseases, and complex environmental problems. The School of Food and Nutritional Sciences is founded on principles of systematic education in the life sciences, and it also offers comprehensive courses in scientific English and information education. This educational program fosters scientists, highly skilled technicians, and registered dietitians who have the communication skills required to work in an international workforce and address food, environmental, and health issues on a global scale. The School offers students the opportunity to engage in comprehensive study and research in the field. Topics covered in the Department of Food Science and Biotechnology include the development and analysis of foodstuffs, and in the Department of Nutrition and Life Sciences include the improvement of health and medical treatment through nutrition. In addition, the Department of Environmental and Life Sciences fosters technical experts who address food-related environmental issues.



## Graduate School of Integrated Pharmaceutical and Nutritional Sciences

The people of Shizuoka Prefecture have one of the longest healthy life expectancies in the world. To understand and enhance the health and lifestyle factors underlying this remarkable life expectancy, the University of Shizuoka combined its research programs in pharmaceutical sciences and food and nutritional sciences in 2012, creating the Graduate School of Integrated Pharmaceutical and Nutritional Sciences — the first graduate school of its kind in Japan. To advance this research agenda in Shizuoka and worldwide, the School has also established three associated research centers: the Center for Pharma-Food Research, the Tea Science Center, and the Food and Environment Research Center. The School has an excellent research record, and has ranked in first place for three funding categories in Japan's national Grants-in-Aid for Scientific Research program: "Eating habits (Dietary sciences)," "Environmental and hygienic pharmacy," and "Integrated nutrition science." It also collaborates with a large number of universities worldwide. The mission of the School is to contribute to society by extending healthy life expectancy through research and education in the pharmaceutical, food, nutritional, and environmental sciences.

## School of International Relations

The rapidly increasing complexity of modern-day societies makes the challenges to smooth international relations now greater than ever. As such, in today's world, successful promotion of peaceful co-existence and maximal human flourishing requires both a comprehensive view of global issues and intimate knowledge of diverse languages and cultures. To this end, the School of International Relations connects students to experts and peers of various national and cultural backgrounds and positions them to view problems from multiple disciplinary perspectives and to think critically regarding possible solutions. In this way, students are encouraged to broaden their understandings and deepen their insights into the complex dynamics of global networks and ultimately develop as individuals who can confidently cooperate to make the world a better place.



## Graduate School of International Relations

In the present age, when connections among the world's peoples only continue to grow stronger and stronger, it is more important than ever to foster the development of international perspectives and professional know-how. To this end, the Graduate School of International Relations, with its carefully designed interdisciplinary curriculum and diverse 60-member collaborating faculty, distributed across its Divisions of International Relations and Comparative Culture and dedicated to fostering individualized learning, challenges students to explore a wide range of essential issues affecting our global and local communities and, thus, prepares them to play an active role in their chosen fields.



## School of Management and Information

Japan is currently facing numerous challenges stemming from domestic and international pressures, including economic and social globalization, a low birth rate, and an aging population, among other issues. The School of Management and Information fosters individuals who can innovate and solve problems by integrating the specialized knowledge of four fields: Business Administration, Policy Studies, Data Science, and Tourism Management. Students acquire basic knowledge in their first year and then hone their expertise in one or more of these areas, thus becoming experts in a particular field who are at the same time familiar with related fields. Graduates of the School are highly regarded by employers, as reflected in their high employment rate, and future graduates are expected to go on to even greater accomplishments.



## Graduate School of Management and Information of Innovation

To respond to newly emerging needs for social innovation, it is necessary both to develop comprehensive strategies that incorporate extensive knowledge of the local circumstances of Shizuoka Prefecture and to provide a center for training individuals capable of making innovation a reality. As such a center, the Graduate School of Management and Information of Innovation aims to maximize the advantages of Shizuoka Prefecture's local characteristics and location, and to foster graduates who can contribute to the local community by generating and utilizing knowledge shoulder to shoulder with the people of the community.



## School of Nursing

The Japanese healthcare landscape is changing at an astonishing rate, driven by factors such as low birthrate and an aging society, increased health consciousness among the public, technological advances and increased specialization in medicine, the impact of bioethics, and the increasing frequency of large-scale disasters. Nursing professionals, including public health nurses, midwives, and registered nurses, must not only have the expertise, skills, and problem-solving ability to navigate this landscape appropriately, but must also work with clients with sincerity and humility. To meet these social needs, the School of Nursing fosters public health and registered nurses with the knowhow and expertise to take on any challenges they may face by providing a curriculum of specialized nursing subjects, including clinical practice at a variety of healthcare and medical institutions, as well as by offering a wide variety of liberal arts courses to foster well-rounded nurses.



## Graduate School of Nursing

The profession of nursing plays multifaceted roles in support of human health. The Graduate School of Nursing draws on the expertise of other departments at the University of Shizuoka and integrates various life science-related fields into its graduate programs. These programs hone the knowledge and practical skills of students and allow them to specialize further in various areas of the nursing profession. The Graduate School of Nursing also fosters nursing science researchers specializing in health, medical treatment, welfare, and education, as well as providing advanced education to nursing practitioners, which contributes to the improvement of human health. The Master's Program in Midwifery was established in 2010, and a Doctoral Program in Nursing was established in 2020. The doctoral program fosters researchers, educators, and nurse leaders who engage in high-quality research and education.



## Junior College

The University of Shizuoka Junior College is located at the University's Oshika Campus in Shizuoka City's Suruga Ward. The College trains students to be healthcare and welfare professionals in the three-year Dental Hygiene Program, the two-year Child Care and Education Program, and the two-year Social Welfare Program, which offers specializations in Social Work and Care Work. The College follows four main educational principles: training students in practical skills needed for professional competence, supporting all students until graduation, emphasizing professional qualifications, and balancing that emphasis with humanistic general education. Through these principles, the College fosters professionals who strive to serve the communities in which they work.





Research activities

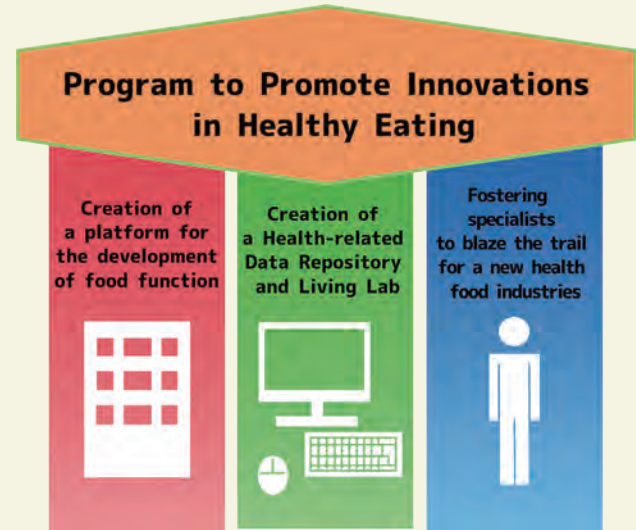
Education and research for longer, healthier lives

While Shizuoka Prefecture is facing local problems such as a rapidly aging population, the departure of younger people, and a decline in local industry, one of its advantages is that its citizens lead the nation in healthy longevity. As the Prefecture’s top educational institution, the University of Shizuoka promotes the systemization of “health and longevity science,” a new discipline combining the pharmaceutical sciences and the food and nutritional sciences through programs sponsored by the Japanese Ministry of Education, Culture, Sports, Science, and Technology (MEXT) such as the 21st-Century Center of Excellence (COE) Program and the Global COE Program. The University has also created a center for



research on healthy longevity. In 2014, the MEXT Center of Community (COC) program sponsored the University’s program called “Center of Community for Healthy Longevity – Promoting Physical, Mental and Community Health.” The COC program coordinates with local municipalities and helps universities both to engage in community-oriented education and research and to contribute to the community. The University of Shizuoka is the only university in the prefecture selected to participate in the program.

In 2019, the University implemented the Program to Promote Innovations in Healthy Eating. A key element of this program is the Health-Related Data Repository and Living Lab. The project is funded by a subsidy from Shizuoka Prefecture to promote the health food industry. The University established this project to assist with efforts to re-examine the lifestyles of the Prefecture’s residents in terms of their health, diet, etc., and residents are actively involved in these efforts. The project collects data on the health of residents and has created a framework to advise residents individually on diet and health. It also recruits participants for validation studies conducted by companies and research institutions, helps to create new industries, and helps the public to lead long and healthy lives.



Research on tea

Thanks to its temperate climate and rich natural surroundings, Shizuoka Prefecture has a long history of thriving agriculture and fisheries industries. Tea cultivation in the prefecture accounts for about 40 percent of all tea produced in Japan. The University of Shizuoka conducts research on tea across its departments, covering topics such as the biological functions of tea, its potential to slow aging and prevent illness, and sales strategies and product development.



Contributing to the community, collaborating with industry and government

A key role of the University of Shizuoka is contributing to the community and collaborating with industry and government. In 2019, the University created its “Innovation Promotion System from Fuji-no-kuni” in order to foster promising personnel through education and training in conjunction with the local community and to contribute to community growth by sharing the results of academic research. Planning is carried out by the Committee for Community Contribution and Collaboration with Industry and Government, which is chaired by the President of the University. The “Fuji-no-kuni Center for Future Education” implements projects that contribute to the community. The Headquarters to Promote Collaboration between Industry and Academia implements projects involving collaboration with industry and government. The creation of this new organization has further promoted interdisciplinary research in the humanities and sciences within the university, has fostered personnel who are sharing the results of research and training with the community, and has promoted efforts to contribute to the community and to collaborate with industry and government.

Major achievements



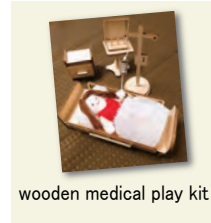
Amela tomato marketing strategy



Mukago yokan (sweet jelly made from yam bulbs)



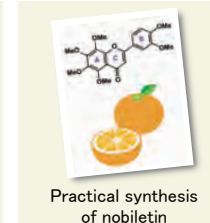
Izu venison mince cutlets



wooden medical play kit



Shizuoka Guidebook for Muslim Food



Practical synthesis of nobiletin

International exchange

The University of Shizuoka has cooperative arrangements with universities throughout the world. It is actively engaged in collaborative research and student academic exchange programs with these overseas institutions.



Number of international students by country [As of November 2023]

	China	Vietnam	Indonesia	Korea	Malaysia	Philippine	Bangladesh	Myanmar	Nepal	Brazil	Canada	Iran	Russia	Sri Lanka	Taiwan	Laos	Total
Undergraduate Students	16	10	7	4	3	2	0	1	1	0	0	1	1	1	1	0	48
Graduate Students	21	1	2	1	0	0	1	0	0	1	1	0	0	0	0	1	29
Research Students	7	0	0	0	0	0	0	0	0	0	0	0	0	0	0	0	7
Total	44	11	9	5	3	2	1	1	1	1	1	1	1	1	1	1	84



# Location

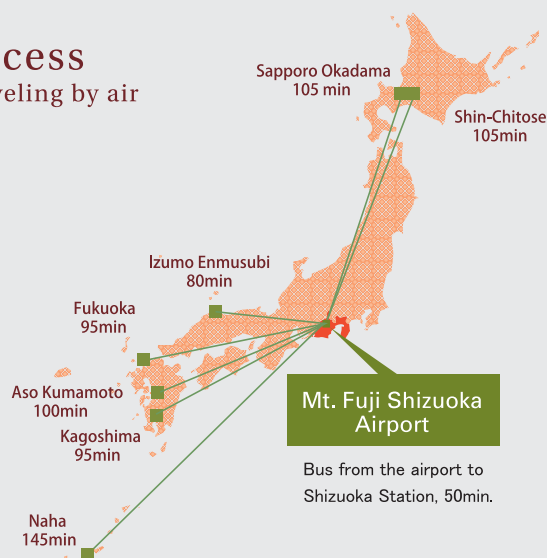
Shizuoka Prefecture is located close to the center of Japan, with easy access to metropolitan areas such as Tokyo and Osaka. Shizuoka is blessed with a temperate climate and rich natural surroundings. It flourished during the Edo Period (17th to 19th centuries) as a location along the Tōkaidō road, the main route between Tokyo and Kyoto. Shizuoka still has many historic sites, traditional festivals, and breathtaking scenic views.



The campus is surrounded by lush green natural surroundings. With museums, libraries, and theatres nearby, the environment offers excellent opportunities for learning and communicating about culture, the arts, and education.

## Access

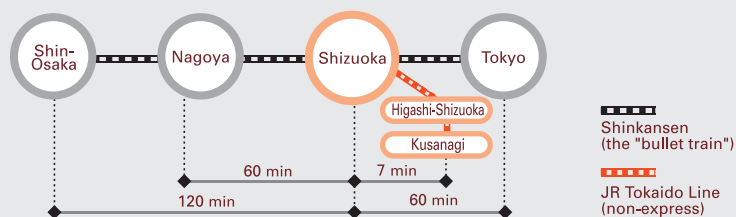
Traveling by air



### About Mt. Fuji Shizuoka Airport

Mt. Fuji Shizuoka Airport opened in 2009. It is Shizuoka's international gateway, providing domestic and international air connections linking to major cities across Japan and throughout Asia.

## Access to Shizuoka Station from major cities



Train times based on JR Central Railway timetable.

Times given for the Shinkansen are for Hikari express trains. Transfer time not included.

### KUSANAGI CAMPUS

#### From Kusanagi Station

15 minutes on foot from Kusanagi Station on the JR Line, or from Kenritsu Bijutsukan Mae (Prefectural Museum) Station or Kusanagi Station on the Shizutetsu Line.  
10 minutes by bus from Kusanagi Station. Take a bus bound for Kusanagi Danchi on the Miho-Kusanagi Route to Kenritsu Daigaku Mae (on weekday mornings) or to Kenritsu Daigaku Iriguchi (on weekday afternoons and weekends).

### OSHIKA CAMPUS

#### From Higashi-Shizuoka Station

20 minutes on foot from Higashi-Shizuoka Station on the JR Line.

#### From Shizuoka Station

15 minutes by bus from Shizuoka Station on the JR Line. Take a bus on the Miwa Ohya Route (No. 8) at the station's north entrance or the Minami Route (No.21) at the south entrance to Oshika-Kyoku Mae Stop. The campus is a 3-minute walk from the bus stop.

